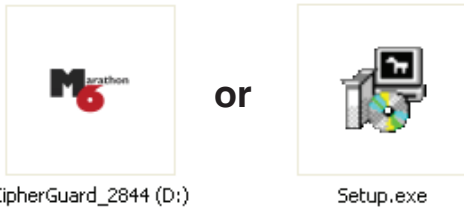


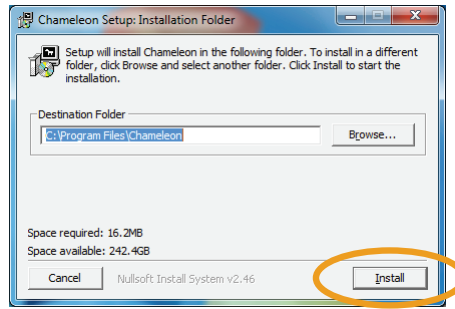
Setting Up the Master Key

1 Insert CD, click on CD icon or open "Setup" file.

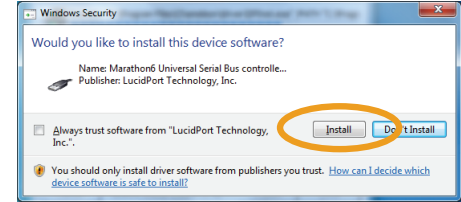


If a security warning appears, click "Run" to continue.

2 Click "Install".



3 Click "Install".

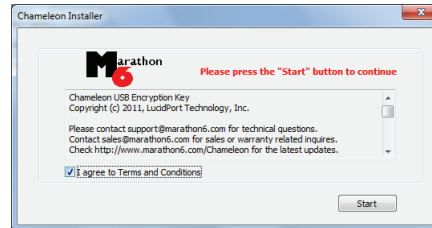


4 Insert Master Chameleon.

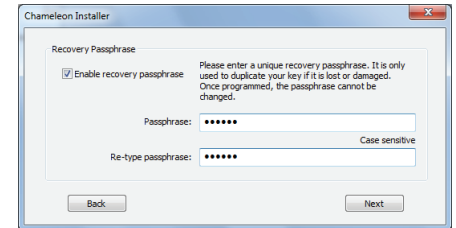
A Found New Hardware Wizard may appear. If so, follow the steps below, otherwise go to Step 5.

1. Select "No, not this time" and click "Next".
2. Select "Install the software automatically" and click "Next".
3. Click "Continue Anyway".
4. Click "Finish".

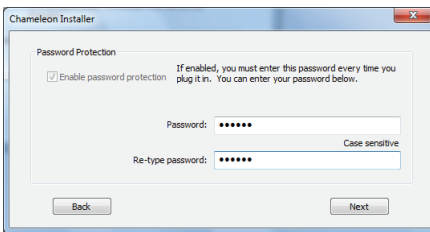
5 Select "I agree..." and click "Start".



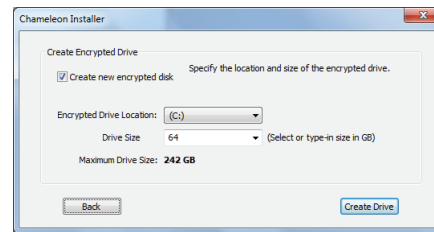
6 Select a recovery passphrase.



7 Select a password.

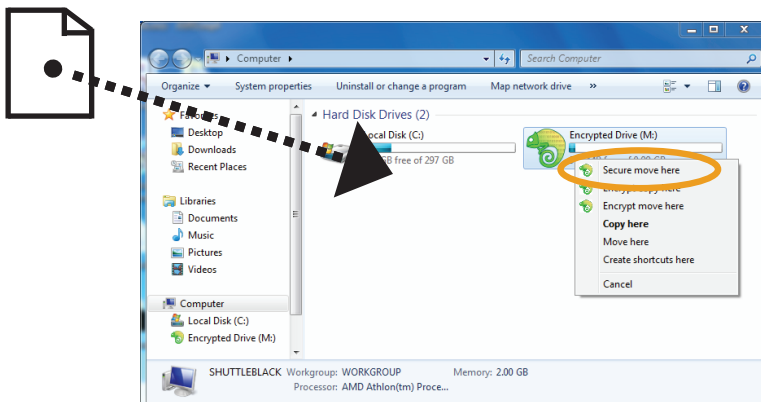


8 Create encrypted drive. Determine the location and size of the protected drive. Click "Finish" when it is done programming.



9 Open My Computer to access the encrypted drive.

To securely move files, hold down the right mouse button, then drag the selected file to the Chameleon drive. Unplug the Chameleon to hide the encrypted drive.



Warning: Do not remove the Chameleon device while writing to the Chameleon encrypted drive.

